



hunters

DESIGNING FOR
EDUCATION



ARCHITECTURE | BUILDING CONSULTANCY | EMPLOYER'S AGENT

hunters

At Hunters we design our services around you.

Designing For Education

Hunters has been designing in the education sector for several years, including primary, secondary, tertiary and research institutions.

We offer a range of services to help clients through the design and build process, feasibility, masterplanning, architectural and urban design, user consultations, planning and technical/BIM delivery.

We have experts supporting clients through every step of the process and bring in different sector expertise from our wider team to ensure your project gets the skills and support it needs.

About Hunters

We are an award-winning, top 40 architectural and building consultancy practice based in London. Set up in 1955, our 70+ team work in a range of sectors including education, later living, housing and healthcare.



Team Leads

Peter Gibson and Rita Pena would be the first points of contact for education projects. Hunters architectural team is set up with a director overseeing each project and creatives and technical staff brought in at each stage. We have a thorough knowledge of UK planning, building legislation (including Principal Designer role) and the challenges and desires in the education system.



Peter Gibson BSc(Hons) BArch, Director
p.gibson@hunters.co.uk

Peter leads Hunters design and technical delivery programmes, using his meticulous planning skills in regeneration, housing, health and commercial projects. His ability to provide energetic design through his architecture and interiors mixed with clear delivery direction gives him a creative edge and strengthen the Hunters Board.



Rita Pena MArch RIBA, Senior Architect
r.pena@hunters.co.uk

Rita manages projects through the architectural life cycle, working closely with our clients and end users to ensure the design and building requirements are met with innovative and pragmatic solutions.

Our Attributes

Problem Solving

We are always open to a challenge, whether a difficult site, a range of end-user requirements or sector specific needs, we call on our wider team to investigate ways of resolving issues. Design is about working through these things, ensuring buildings are designed for the people who use them.

Experience

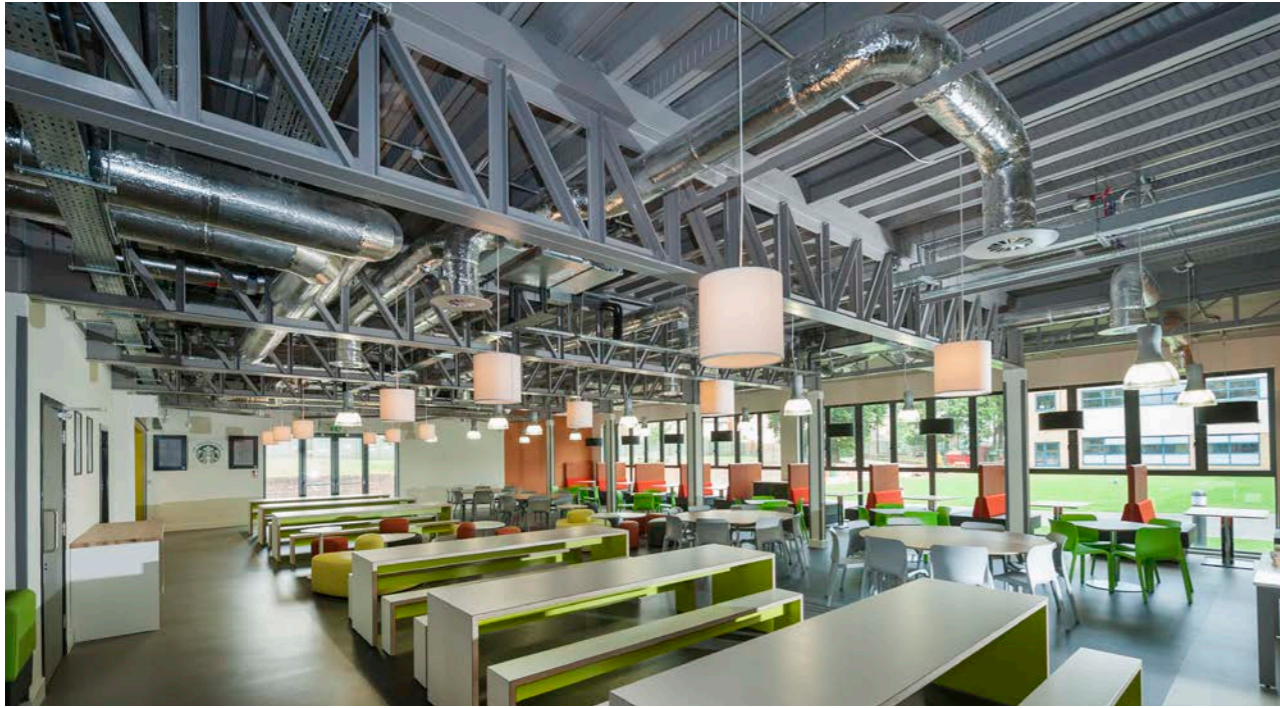
The team at Hunters works to draw the best solutions as we have specialists in different areas from sustainability to community design who provide expertise and advice throughout the projects.

Aesthetics

Designing for people, we mix creativity with effectiveness, composing award-winning, viable buildings. Providing ideas, innovation and expertise to our clients, our buildings fit into their surroundings.

Technical Competence

We come up with workable solutions- so not only do you get great ideas; you get outstanding delivery and a building which works.



↑ The Dining Room

Ashmole Academy 6th Form, North London

A renowned hub for 6th form science and music education in Southgate, North London required a new architecturally designed building to amplify its exceptional teaching. Together we built an inspiring space that elevates learning to new heights.

Our purpose-built block boasts cutting-edge prefabrication techniques, crafting a bold and resilient design. Tailored for 380 A-level students, our vibrant centre was constructed in just 12 weeks, thanks to a modular system that kept the school fully operational throughout. With visible structure and services on the ground floor, we've achieved a cost-effective, industrial-inspired look.

Ashmole Academy 6th Form ↓



Break Out Spaces ↑





↑ The Library



Woodland Corridors ↑

Forest Way, SEN School, Leicestershire

This inclusive educational campus site, with two secondary schools, a primary school and LCC office accommodation, is set just below the summit of a hill, with views over the entire town of Coalville. Historic woodland, which forms part of the National Forest, and a series of dry stone walls provide an imposing setting. Our architectural response to the new special school has been to blur the boundary between inside and out by creating a series of teaching 'fingers' linked to a central heart, all providing very different focused views of individual site elements.

Forest Way ↓



Forest Way ↑





Reception ↑

Gamma Delta Therapeutics, White City

Our project within WestWorks building in White City unveils the dynamic offices and research labs for Gamma Delta Therapeutics. Here, the future of research and development takes root in space designed for inspiration and discovery.

The healthcare team created two brand new open-plan work spaces, a modern wood paneled and teal reception area, a break out space, and two opulent board rooms. Direct access to the laboratory from the office spaces allows for a close connection that improves working patterns.

Gamma Delta Therapeutics ↓



Gamma Delta Therapeutics ↑

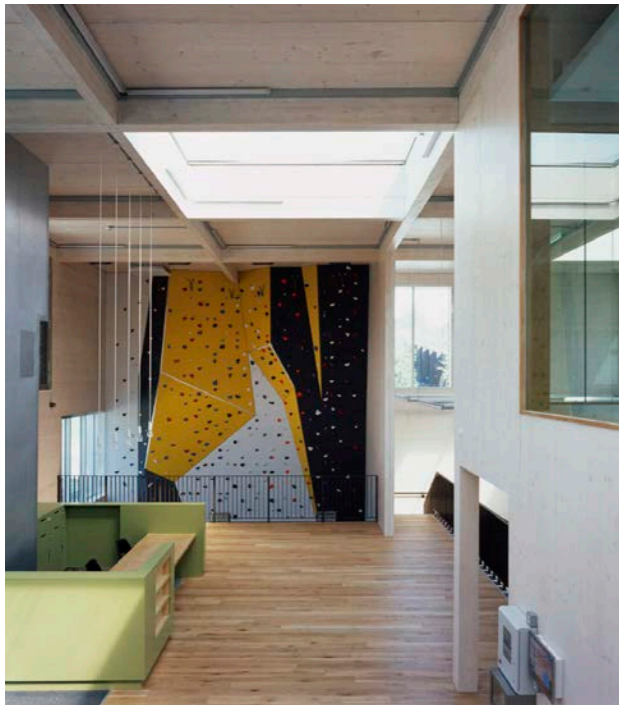




TNG Community Centre, Lewisham

The award-winning £3.5m youth centre in South-East London features a climbing wall, training kitchen and cafe, multi-use games area, recording studio and dance and performance spaces. The centre was designed in consultation with young people from the local area with the intention of providing a safe, modern place for 13-19 year olds in Bellingham, Sydenham and Forest Hill. We provided EA services on the project.

TNG Community ↓



TNG Community ↑





Ashmole Academy Creative Unit, North London

A new teaching block at Ashmole Academy in Barnet, North London, has been given the green light by planners.

The proposed building will offer flexible internal and external performance areas, additional instructional spaces for the creative drama and music departments and associated landscaping improvements.

The overall design concept has assisted in redefining the entrance to the entire school, enhancing the setting of the current structures, and bringing purpose to the unused areas between them.

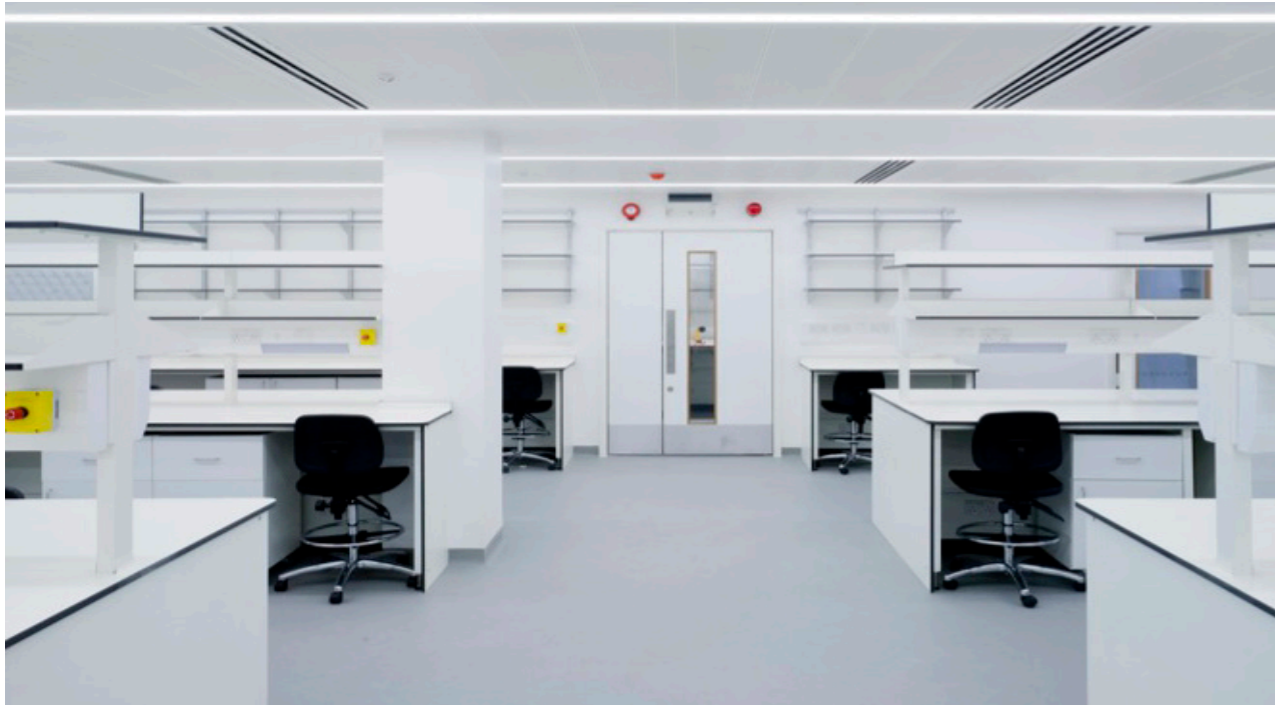
Ashmole Creative Unit ↓



Ashmole Creative Unit ↑



14



↑ Top Research Laboratories



Jenner Wing ↑

Jenner Wing, Tooting

Working closely with the estates and facilities team, the refurbished Jenner Wing gives St George's University a step change in the way they use their research facilities. The scheme provides high-tech laboratories and flexible office space with an infusion of natural light and open spaces. The end result is an uplifting and popular space that will be used as a model for the whole research campus.

Jenner Wing ↓





Administration & Teaching St. George's

Hunters revamped the top two floors of St George's Hospital administration block. The dated building (which is around 40 years old) was no longer fit for purpose and couldn't facilitate the needs of the team working there. The new space allows for improved technology to be used and natural daylight to light up the spaces. It significantly improves the learning environment for the university and hospital.

Administration & Teaching St. George's ↓



Administration & Teaching St. George's ↑





Horton Halls, Tooting

The halls of residence for St. George's, University of London, provides 332 medical students with self-catering single study/bedroom units, each with its own en-suite, in clusters of four to six units.

As part of the wider estate redevelopment by Hunters, including keyworker accommodation, Horton Halls Student Residences provides new and contemporary accommodation for medical students.

[Horton Halls](#) ↓



[Horton Halls](#) ↑



20



St. George's University Library, Tooting

The design focused on technical and resource excellence for students whilst keeping with SGUL's corporate image. The refurbishment successfully deals with the high volume of people using the facility and includes a cafe. The project forms part of our work throughout the university, including halls, lecture theatres, training rooms and administrative facilities.

Library at St. George's ↓



Library at St. George's ↑





West Drayton Leisure Centre, Hillingdon

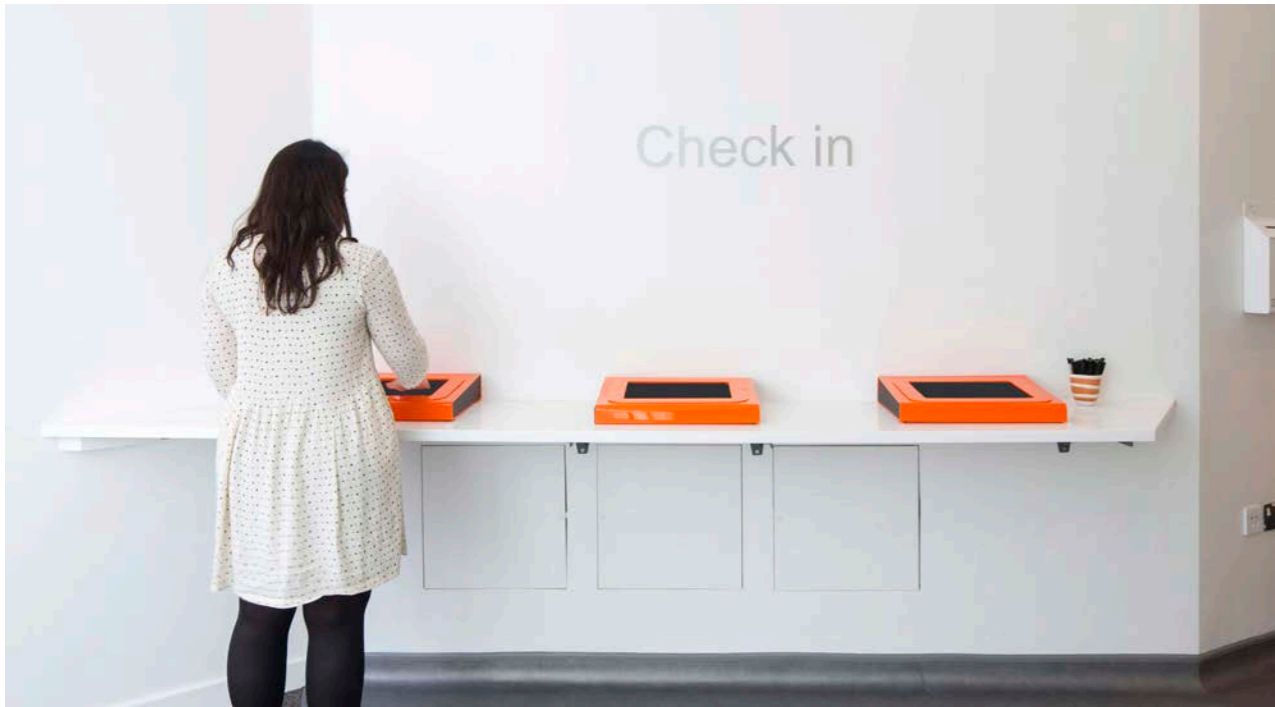
Hunters architectural team won planning for a powerful, uplifting new leisure centre in West Drayton, Hillingdon, West London. The sports complex enables family fun and committed workouts with two pools, a gym and a roof top sports pitch. This is one of a number of projects the team are delivering in the London Borough of Hillingdon.

West Drayton ↓



West Drayton ↑





Leadenhall, City of London

A short walk from Bank, Aldgate, Tower Hill and Liverpool Street stations, this sexual health clinic is perfectly located to serve people living or working in the City of London.

Our design broke convention by using angled walls to get around the limitations of a difficult urban setting, making the most of every square metre for maximum functionality. To design a light, open, and welcoming space that gives clients the maximum privacy, we worked closely with the personnel at Homerton Hospital. Our dedication to creative healthcare design is demonstrated by Leadenhall, our satellite clinic for Homerton Hospital.

Leadenhall ↓



Leadenhall ↑



26

Some of Our Clients

Royal College of Music

Windsor Rugby Club

Royal Society of Medicine

London School of Economics

St George's University

London Borough of Hounslow

University of Reading

The London Clinic

Forest Way SEN School

Ashmole Academy Trust

NHS Trusts

London Borough of Hillingdon

Gamma Delta

Leicestershire County Council



hunters

ARCHITECTURE | BUILDING CONSULTANCY | EMPLOYER'S AGENT

Space One Beadon Road
London W6 0EA

020 8237 8200
mail@hunters.co.uk



Hunters Architects & Building Consultants



Hunterslondon

hunters.co.uk